



United States Department of Agriculture



## Land Between the Lakes National Recreation Area

### Media Contact

Christopher Joyner  
270.924.2005  
lbinfo@usda.gov

## NEWS RELEASE

[www.landbetweenthelakes.us](http://www.landbetweenthelakes.us)



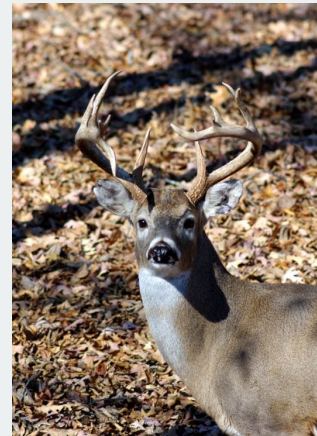
## Land Between the Lakes "No Hunting" Zones Open to Archery Deer Hunting

### Land Between the Lakes , Ky./Tenn. - December 9, 2019 -

Land Between the Lakes National Recreation Area opened certain zones to archery hunting that are typically marked as "No Hunting." Hunters are encouraged to harvest antlerless deer in these areas to reduce deer populations.

No hunting zones in Kentucky now open to archery hunting through Jan. 20 include Hillman Ferry and Energy Lake Campgrounds.

No hunting zones in Tennessee now open to archery hunting through Jan. 5 include Brandon Spring Group Center and the South Nature Watch Demonstration Area in the eastern portion of Hunt Area 16.



Remember, hunting is not permitted within 150 yards of any facility, building, or occupied area. Maintenance staff will continue working throughout the winter in facilities. Hunt with caution. Hunting woodlands within the campground boundaries, away from campsites, is permitted.

Camping is available at Wranglers, Piney and self-service campgrounds the entire year. Camping is also permitted in basic and dispersed camping areas with the purchase of a basic camping permit. Energy Lake and Hillman Ferry campgrounds have closed for the season.

Hunters age 16 and older are required to purchase a Land Between the Lakes Hunter Use Permit and possess all state required licenses and permits for the state being hunted. Land Between the Lakes Hunter Use Permits can be purchased online 24/7 at [www.landbetweenthelakes.us/reservations](http://www.landbetweenthelakes.us/reservations), at Golden Pond Visitor Center, Wranglers and Piney Campgrounds year-round or at stores that sell state hunting licenses.

To find more information about Land Between the Lakes, log on to the official website at [www.landbetweenthelakes.us](http://www.landbetweenthelakes.us) or call 1.800.525.7077 or 270.924.2000.

Photos available on Flickr at <https://www.flickr.com/photos/lbkytn/albums>.

□